

## October 2013 Catalogue

### **Special FX light & animation modules, LED lighting and wiring aids for plastic, miniature and railway modellers, and architects**

**Page 1: LEDs**

**Page2: Wiring and Lighting Aids**

**Page3: LiteMate, light FX modules and ServoMate Animator**

**Page4: Product Photos**

Graham Dredge

Westimation

41 Fitzherbert Avenue

West Harbour

Auckland 0618

[westimation@xtra.co.nz](mailto:westimation@xtra.co.nz)

**Please Email Graham to confirm prices and P&P before payment**

**Post and Pack varies depending on order size and country**

Payment can be made via Pay Pal or bank deposit please ask

Prices as at October 2013,

Westimation endeavours to hold these prices for at least three months.

**E&OE**



## LED Price List

US\$2.50, NZ\$3 per pack

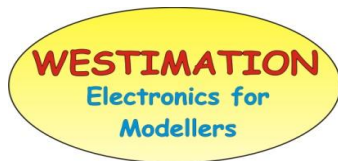
P&P extra

Range	Part #	Description (See Photos on Page 4)	Size	Wave Length "nm" or Colour Temperature "K" @20mA	mcd (Brightness) @20mA	Pack Quantity
LEDs 1.8mm	L-1.8-WY	WARM WHITE Miniatronics "Yeloglo"	1.8mm	UA	>10,000	2
LEDs 2mm Top Hat	L-2-R	RED (Red Coloured encapsulant) Kingbright	2mm	700	2	5
LEDs 2mm Top Hat	L-2-W	WHITE "Fluorescent"	2mm	6-7000K	14,000	2
LEDs 2mm Top Hat	L-2-WY	WARM WHITE Miniatronics "Yeloglo"	2mm	UA	>10,000	2
LEDs 3mm Round Top	L-3-BC	Bright BLUE (Clear Lens)	3mm	465	6000	5
LEDs 3mm Round Top	L-3-RC	Bright RED (Clear Lens)	3mm	625	4000-5000	5
LEDs 3mm Round Top	L-3-W	WHITE "Fluorescent"	3mm	6-7000K	20,000	4
LEDs 3mm Round Top	L-3-WW	WARM WHITE "Incandescent"	3mm	3500K	14,000	4
LEDs Mini	L-Mini-B1	Bright BLUE (0805 size)	2 x 1.25mm	465	180	5
LEDs Mini	L-Mini-G1	Bright Signal GREEN (0805 size)	2 x 1.25mm	520	380	5
LEDs Mini	L-Mini-Y1	Bright YELLOW (0805 size)	2 x 1.25mm	595	140	5
LEDs Mini	L-Mini-R1	Bright RED (0805 size)	2 x 1.25mm	625	180	5
LEDs Micro	L-Micro-B1	Bright BLUE (0603 size)	1.6 x 0.8mm	645	180	5
LEDs Micro	L-Micro-G1	Bright Signal GREEN (0603 size)	1.6 x 0.8mm	520	380	5
LEDs Micro	L-Micro-Y1	Bright YELLOW (0603 size)	1.6 x 0.8mm	595	140	5
LEDs Micro	L-Micro-R1	Bright RED (0603 size)	1.6 x 0.8mm	625	150	5
LEDs SMD	L-2720-WW	WARM WHITE 120 degree view angle " by Cree"	2.7 x 2mm	3500	1,500	3
LEDs SMD	L-3228-W	WHITE 120 degree view angle	3.2 x 2.8mm	6-7000K	1,500	4
LEDs SMD	L-3228-WW	WARM WHITE 120 degree view angle	3.2 x 2.8mm	3500	2,000	4
LEDs Mini	L-Mini-W	WHITE "Fluorescent" (0805 size)	2 x 1.25mm	6-7000K	360	5
LEDs Mini	L-Mini-WW	Incandescent WARM WHITE (0805 size)	2 x 1.25mm	3500K	360	5
LEDs Micro	L-Micro-W	Fluorescent WHITE (0603 size)	1.6 x 0.8mm	6-7000K	360	5
LEDs Micro	L-Micro-WW	Incandescent WARM WHITE (0603 size)	1.6 x 0.8mm	3500	350	5
LEDs Nano	L-Nano-W	Fluorescent WHITE (0402 size)	1 x 0.5mm	6-7000K	240	5
LED Mini Prewired	LW-Mini-B1	Bright BLUE (0805 size)	2 x 1.25mm	465	180	1
LED Mini Prewired	LW-Mini-G1	Bright Signal GREEN (0805 size)	2 x 1.25mm	520	380	1
LED Mini Prewired	LW-Mini-Y1	Bright YELLOW (0805 size)	2 x 1.25mm	595	140	1
LED Mini Prewired	LW-Mini-R1	Bright RED (0805 size)	2 x 1.25mm	625	180	1
LED Mini Prewired	LW-Mini-W	WHITE "Fluorescent" (0805 size)	2 x 1.25mm	6-7000K	360	1
LED Mini Prewired	LW-Mini-WW	Incandescent WARM WHITE (0805 size)	2 x 1.25mm	3500K	360	1

Colours shown are to assist you selecting LEDs and are not be the true LED colour

All LEDs can be used for LED lighting in miniatures, model rail and buildings, and architectural modelling.

[westimation@xtra.co.nz](mailto:westimation@xtra.co.nz)



## Wiring and Lighting Aids

Ideal for model rail DCC installs and LED lighting in buildings and architectural modelling

Email

[westimation@xtra.co.nz](mailto:westimation@xtra.co.nz)

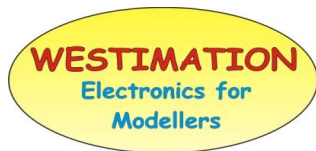
**Supplied with Instructions where required**

Product	Part #	Description (See Photos on Page 4)	Detail	Price NZ\$	Price US\$
Connector Strip	<b>C-1</b>	Connector 40W for Interconnect	2.54mm Pitch, cut to required length	\$ 3.00	\$ 2.50
Resistor Board	<b>R-1000</b>	Resistor Board with 4 resistors, for LEDs 13.5x11.5mm	For general LED Use, 7-10mA depending on colour	\$ 5.00	\$ 4.00
Resistor Board	<b>R-820</b>	Resistor Board with 4 resistors, for miniature Incandescent lamps 13.5x11.5mm	For 1.4-1.5V incandescent lamps	\$ 5.00	\$ 4.00
Resistor Board	<b>R-680</b>	Resistor Board with 4 resistors, for LEDs 13.5x11.5mm	For LEDs if higher brightness required approx 10-20mA depending on colour	\$ 5.00	\$ 4.00
Resistor Board	<b>R-470</b>	Resistor Board with 4 resistors, for LEDs 13.5x11.5mm	For LEDs if maximum brightness approx 15-25mA depending on colour	\$ 5.00	\$ 4.00
Resistor Board	<b>R-000</b>	Resistor Board without resistors, 13.5x11.5mm	You supply and solder 1206 size resistors	\$ 2.50	\$ 2.00
Light Pipe	<b>ACR-1</b>	Round Clear Acrylic Rod for light pipes and tubes	1.6 & 3.2mm Round; 100mm of each	\$ 3.00	\$ 2.50
Light Pipe	<b>ACR-2</b>	Square Clear Acrylic Rod for light pipes and tubes	1.6 & 3.2mm Square; 100mm of each	\$ 3.00	\$ 2.50
Heat Shrink	<b>HS-1</b>	3:1 Shrink Ratio ideal for all fine wire joint insulation (usual heat shrink is 2:1 shrink ratio)	1.5mm x100mm long ; 3mm x 100mm; 6mm x50mm	\$ 3.00	\$ 2.50
					\$ -
					\$ -

**P&P extra**

All products can be used for LED lighting in miniatures, model rail and buildings, and architectural modelling.

[westimation@xtra.co.nz](mailto:westimation@xtra.co.nz)



## Animation FX Modules Price List

Demonstration videos on YouTube; search for Westimation

Email

[westimation@xtra.co.nz](mailto:westimation@xtra.co.nz)

**Very Limited Stock of LightMate modules Please ask if available before ordering**

Range	Part #	Description (See Photos on Page 4)	Detail	Supplied with Instructions and	Price NZ\$	Price US\$
LightMate	<b>BL2</b>	LED BLINKER Two Blinks	Two Quick Flashes every 1.2 Seconds	LiteMate Module, 3mm Super Bright Red LED	\$ 15.00	\$ 14.00
LightMate	<b>EF1</b>	EMERGENCY FLASHER Old Type	Simulates rotating beacon	LiteMate Module, 1 Red 3mm LED	\$ 15.00	\$ 14.00
LightMate	<b>EF3</b>	EMERGENCY FLASHER Old Type	Simulates two rotating beacons, slightly out of sync	LiteMate Module, 2 Red 3mm LEDs	\$ 16.00	\$ 15.00
LightMate	<b>ET</b>	"FRED" END-OF TRAIN WARNING DEVICE	Quick Flash every 2.3 Seconds will run for more than 1 year on 3V button Cells	LiteMate Module, 1 Red Super Bright 3mm LED	\$ 15.00	\$ 14.00
LightMate	<b>FL1</b>	LED FLASHER	Flashes LEDs at Fast or Slow speed	LiteMate Module, 2 Red 3mm LEDs	\$ 16.00	\$ 12.80
LightMate	<b>FS2</b>	FAULTY FLUORESECENT TUBE	Simulates Faulty Fluorescent Starter	LiteMate Module, 1 Fluoro White Super Bright 3mm LED	\$ 15.00	\$ 14.00
LightMate	<b>WF</b>	WELDER FLICKER GENERATOR	Random LED Flicker, changes brightness with random on and off times	LiteMate Module, 1 Fluoro White Super Bright 3mm LED	\$ 15.00	\$ 14.00
ServoMate	<b>SM1</b>	SERVOMATE	Model Animator & Turnout Servo, the only complete Servo animation unit available.	Micro Servo, Electronic PCB, Mounting Bracket , ALL Screws & Turnout Power Switch	\$ 45.00	\$ 36.00

**P&P extra**

**Westimation is manufacturing a new light and sound FX module, it is expected the range will be available November 2013**

[westimation@xtra.co.nz](mailto:westimation@xtra.co.nz)

Note: Not actual size for comparison only.

**LEDs**



- 1.8mm
- 2mm Top Hat
- 2mm Top Hat Coloured Lens
- 3mm Round Top Clear Lens
- 3mm Round Top Coloured Lens

**SURFACE MOUNT LEDs**



- 3.2 x 2.8mm
- 2.8 x 2.2mm Cree
- 2 x 1.25mm Mini

**Prewired LEDs**



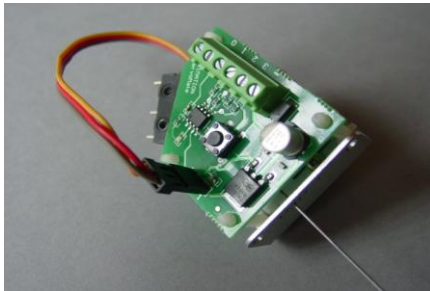
2 x 1.25mm Mini LEDs

**RESISTORS**

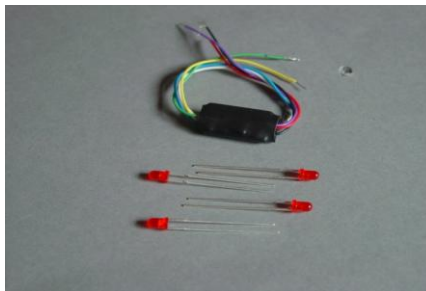


1206 3.2x 1.6mm

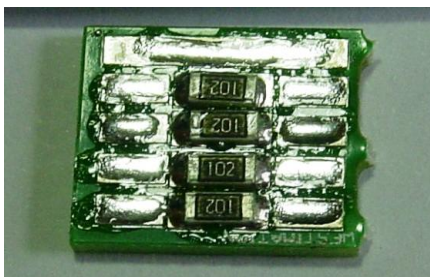
**ServoMate**



**LiteMate Modules**



**Resistor Boards**



Size is 13.5x11.5mm  
Ideal for Model Railway DCC lighting resistors  
or for general LED current limiting resistors  
Top row is for common connection  
Bottom rows can be cut off if required.

**CONNECTOR C1**

40 pins 2.54mm pitch makes 20 connections

